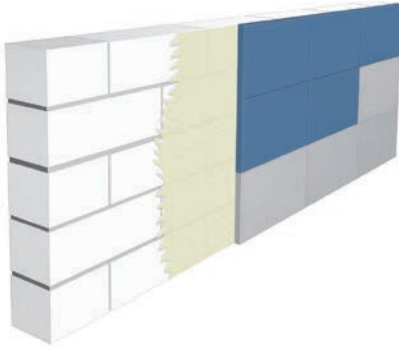


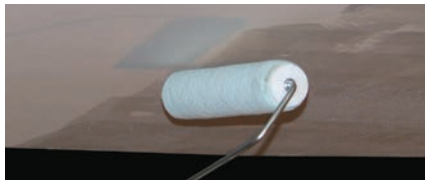
# PHONSTOP™ Ceiling and Wall Tiles

## Installation Instructions

### PHONSTOP V Ceiling and Wall Tiles



Adhesive applications to walls or ceilings:



- Prime structurally sound, relatively smooth, clean, dry and level wall or ceiling surface with PHONSTOP pt17 solvent-free primer.
  - Use a 1/4" (6 mm) nap roller for smooth surfaces.
  - Use a 3/8" (10 mm) nap roller for rougher surfaces.
  - Let dry 20 minutes or more.
- Adhere PHONSTOP to primer-treated surface.
  - Depending on desired design, orient the tiles with the square or beveled edge facing toward the exposed side.

- Using a mixing paddle on a corded drill, mix 1 bag of PHONSTOP pt81 adhesive with approximately 2 gallons (7.57 liters) of clean water per bag. Adjust for smaller batches, approx. 2 parts adhesive to 1 part water.
- Apply adhesive to the back of each tile using a 3/8" (10 mm) notched trowel.



- Be careful not to get any adhesive on the exposed tile faces.
- Place panel in desired location (maximum 30 minutes open time) and secure by gently moving the tile back and forth.
- PHONSTOP is sensitive to impact during installation.



- PHONSTOP can be cut with a hand or table saw.
  - Sand edges using a sanding block or another piece of PHONSTOP.

### Coating\*:

- Acoustical coating\*.

Unpainted outdoor, weather-exposed conditions:

- Using a roller or airless sprayer, apply 1 gallon (3.79 liters) of PHONSTOP pa13 sealer per 100 square feet (9.29 meters<sup>2</sup>) over the panels' permeable finished surfaces for additional durability.

Plastering\* (seamless monolithic appearance indoors):

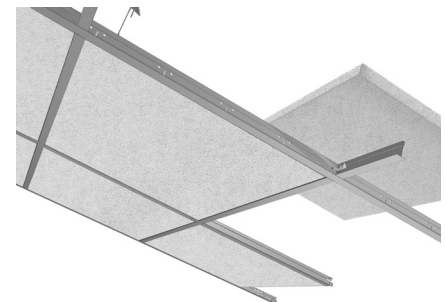
- Treat the seams with a skim coat – let dry 1/2 hour or more.
- Prime exposed PHONSTOP surface with PHONSTOP pt17 primer.
  - Use a 1/4" (6 mm) nap roller for smooth surfaces.
  - Use a 3/8" (10 mm) nap roller for rougher surfaces.
- Apply skim coat of PHONSTOP pa85 plaster.
- When completely dry (12 hours or more) apply a finish coat.
  - Do not add water to plaster.
  - Mix tub contents well with a mixing paddle.
  - Plaster should not be painted.
  - Plaster is manually applied. As a result, the surface may be uneven.

### PHONSTOP E Ceiling Tiles

Ceiling grid applications for ceilings:

- Fits any 15/16" (24 mm) ceiling grid systems.
- Drop ceiling tile into place.
- Gently press tiles from above (do not pull from the face) to snap them into the grid.
  - PHONSTOP is sensitive to impact during installation.

- To prevent soiling, wear clean cotton or canvas gloves to handle tiles.
- PHONSTOP can be cut with a hand or table saw.
  - Sand edges using a sanding block or another piece of PHONSTOP.
- Preferably install PHONSTOP at the end of the construction project.



\*Plaster and acoustical coating may only be applied by a certified applicator.